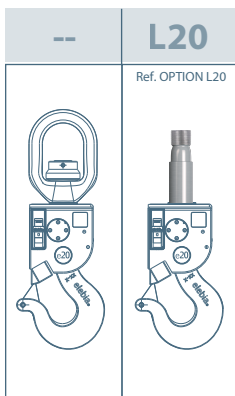


**WORKING
LOAD LIMIT**

20.000 Kg

SAFETY FACTOR 4:1

TOP LINK OPTION



**APPROXIMATE
WEIGHT**

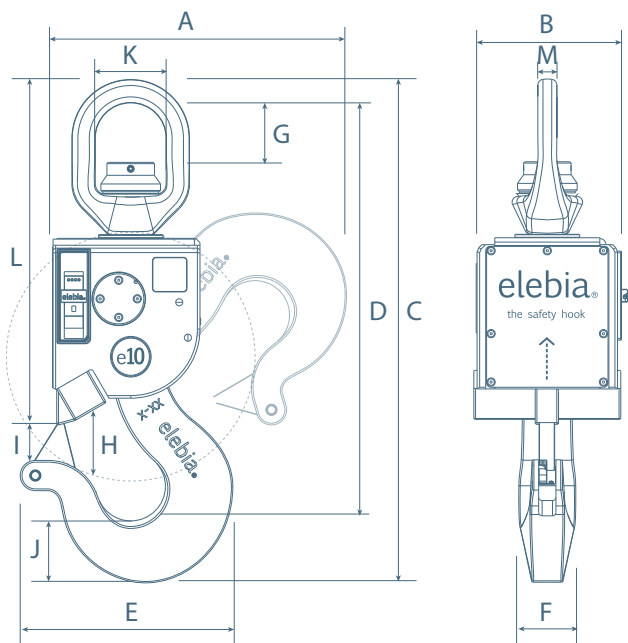
43 Kg

--* Kg

SIZE CHART

*L Size is on demand

| | | |
|---|--------------|--------------|
| A | 341 / 13.43 | 341 / 13.43 |
| B | 182,3 / 7.18 | 182,3 / 7.18 |
| C | 663 / 26.10 | CUSTOM |
| D | 553 / 21.77 | CUSTOM |
| E | 246 / 9.68 | 246 / 9.68 |
| F | 66 / 2.60 | 66 / 2.60 |
| G | 105 / 4.13 | CUSTOM |
| H | 83 / 3.27 | 83 / 3.27 |
| I | 42 / 1.65 | 42 / 1.65 |
| J | 72 / 2.83 | 72 / 2.83 |
| K | 115 / 4.53 | CUSTOM |
| L | 480 / 18.90 | CUSTOM |
| M | 29 / 1.14 | CUSTOM |



Disclaimer: This chart is for information only. The manufacturer reserves the right to modify specifications.