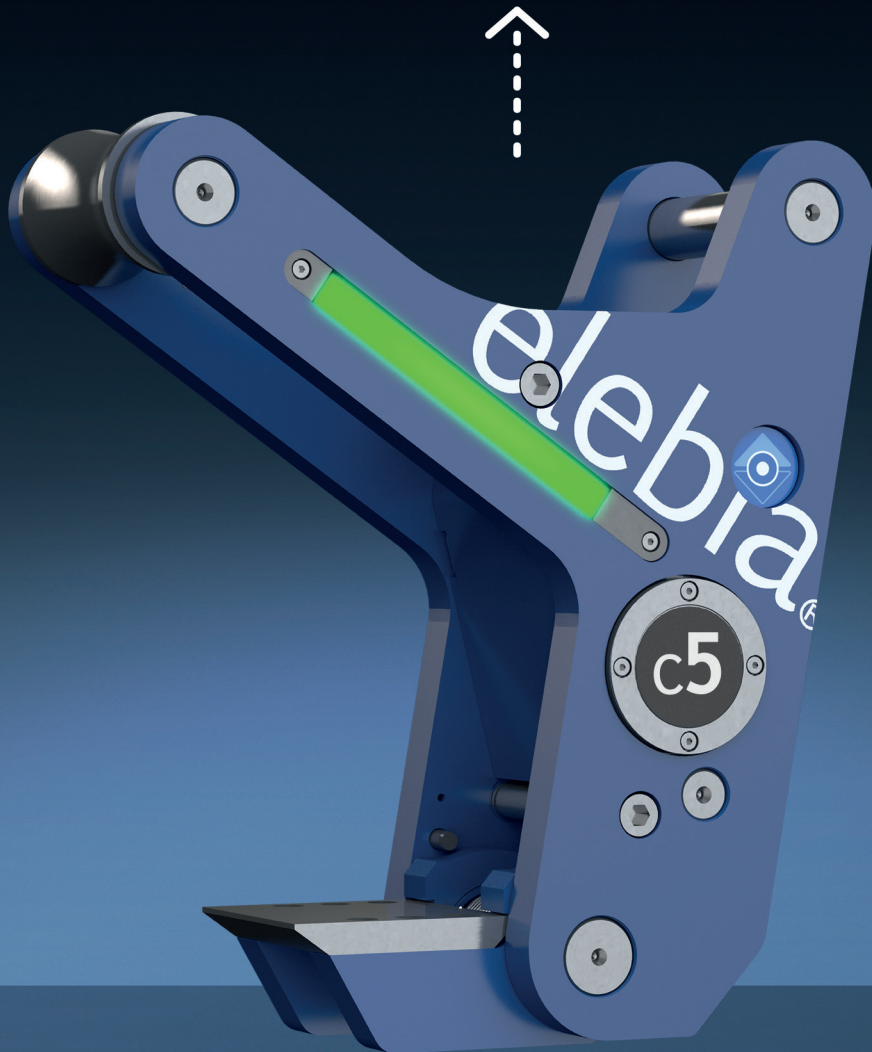


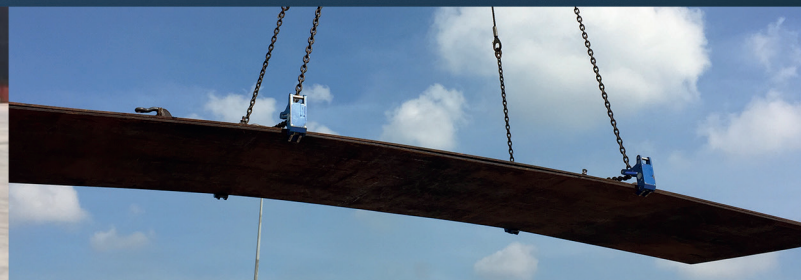
elebia®

smart lifting solutions



C5 & C6 Automatic Lifting Clamps

The C5 & C6 automatic lifting clamps are ideal for lifting and moving steel plates, beams or pipes thanks to the remote release feature and its fail-safe design. Lift and transport with the C5 & C6 automatic release clamps in a safe and secure manner, minimising risks, enhancing safety and increasing productivity in your lifting operations



For more information visit us at www.elebia.com

Stevedore, windpower, steel mills, mining, aeronautics, nuclear, construction... No matter what your industry is **elebia will boost the safety and productivity of your cranes.**

elebia autohooks s.l. · Tel. (+34) 93 543 4706 · www.elebia.com · info@elebia.com

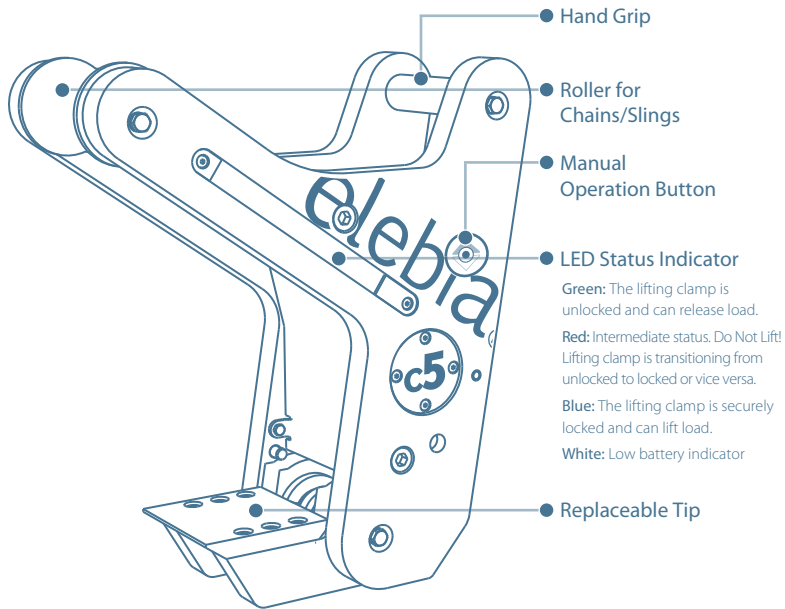
Main Features of the C5 & C6 Automatic Lifting Clamps

WORKING LOAD LIMIT

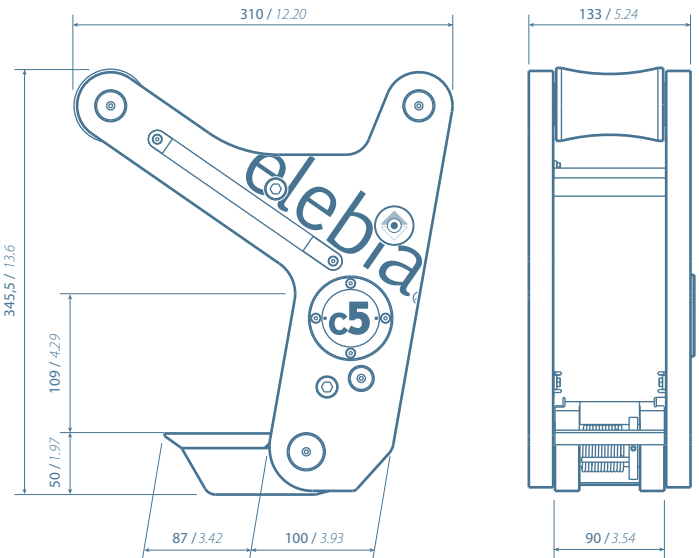
C5 5,000 kg / 11,023 lbs.

C6 6,000 kg / 13,227 lbs.

Weight: 19,26 kg / 123,46 lbs



Green: The lifting clamp is unlocked and can release load.
Red: Intermediate status. Do Not Lift! Lifting clamp is transitioning from unlocked to locked or vice versa.
Blue: The lifting clamp is securely locked and can lift load.
White: Low battery indicator



mm / inches

Remote Control



Battery - High capacity: 3 hour charge – 5,000 cycles / 250 hours in standby mode

Display Information

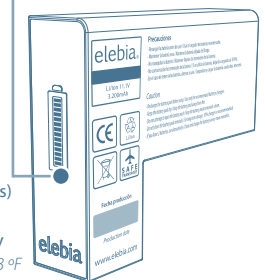
Open Button

Close Button



Charge Indicator

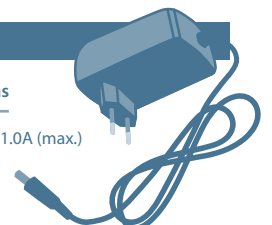
Technology	Rechargeable Li-Ion
Maximum Voltage	12.6 V DC
Nominal Voltage	10.8 V DC
Nominal Capacity	3.4 / 36.72 Wh
Protection Circuit	Charge, Discharge, Overvoltage
Maximum Discharge Current	8 A for 1 second (idle 5s)
Heat Protection	Thermal 70 °C / 158 °F
Charge Indicator	Eink 14 Segment Display
Temperature (Charge)	0 °C to 45 °C / 32 °F to 113 °F
Temperature (Discharge)	-20 °C to 50 °C / -4 °F to 122 °F
Temperature (Idle)	-20 °C to 60 °C / -4 °F to 140 °F
Weight	200 g aprox. / 7.05 oz



Power Supply	1x 3V lithium battery (CR2032)
Detection of Errors in Transmission	2 CRC bytes + Forward Error Correction
Buttons	2
Frequency Selection	5
Frequencies	868 MHz / 924.1 MHz
Communication	Bi-directional return of receiver batter
Radiated Power	under 5dBm
Antenna	Printed circuit
Range	100 metres / 330 feet
Working Temperature	-20 °C to 85 °C / -4 °F to 185 °F
Dimensions	Minitel box (68 x 52 x 17 mm / 2.68 x 2.05 x 0.67 inches)

220V Charger

Specifications	Technical Specifications
Input Voltage	100-240 V AC / 50-60Hz. 1.0A (max.)
Output	12.6 V DC / 1.2 A
Charge Indicator	No
Charge Complete Indicator	No



Regulatory Standards

ASME B30.10-2009 (C5)	UNE-EN 1050	- Directive on Machine Safety (D2006/42/EC)
ASME B30.20-2010 (C5)	UNE-EN 13155:2004 + A2	- EMC Directive (2014/30/EU)
EN 10204 3.1.B	UNE-EN 60204-1:2007	- Low Voltage Directive (2014/35/EU)
D89/391/EEC	UNE-EN 61000-6-4:2007	- Radio Equipment Directive (2014/53/EU)
D89/654/EEC	UNE-EN 61000-6-2:2006	- Assurance of Production Quality in accordance with ISO9001.
D89/655/EEC	UNE-EN ISO12100:2012	- ARIB Construction Design Certification Number 203-JN0689.
D89/656/EEC	UNE-EN-13155 (C6)	- FCC Identifier 2ACLHEVO for Equipment Class: Digital Transmission System.
D92/58/EEC 9a	UN 38.3	



www.elebia.com/lifting-clamps